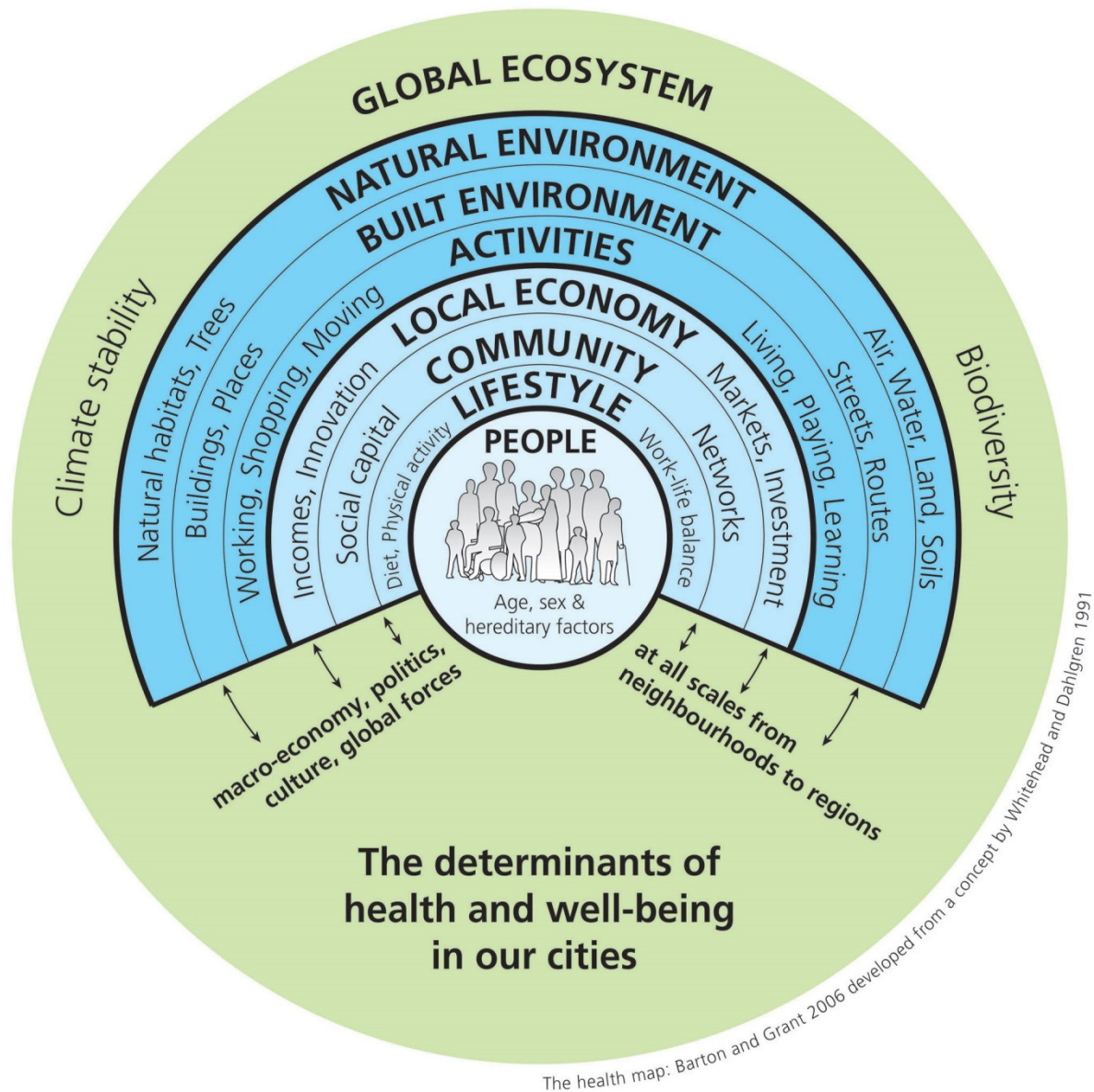


The Barton and Grant model of the determinants of wellbeing and health in our cities



Barton, H. and Grant, M. (2006) A health map for the local human habitat. *The Journal for the Royal Society for the Promotion of Health*, 126 (6). pp. 252-253. ISSN 1466-4240 developed from the model by Dahlgren and Whitehead, 1991.

Dahlgren G, Whitehead M (1991). "The main determinants of health" model, version accessible in: Dahlgren G, and Whitehead M. (2007) *European strategies for tackling social inequities in health: Levelling up Part 2*. Copenhagen: WHO Regional Office for Europe http://www.euro.who.int/data/assets/pdf_file/0018/103824/E89384.pdf